

Acquire, Share and Save Rich Digital Images

Obtain high resolution visible light images for your patient education and medical records. Look at them in real time or save them for later review and/or consult.

- Select and save as many images as desired.
- Annotate & measure features directly on the image.
- Highlight image features with lines and circles.
- Place time, date and location stamp on the image.
- Save image with any and all added notations, drawings and measurements.

Open Architecture

CapSure is a PC-based system that integrates with most videoconferencing systems.

- Use on a PC to compare features from prior office visits.
- Use with PC software clients to share images with a remote provider.
- Use with codec-based systems to share images with a remote provider.

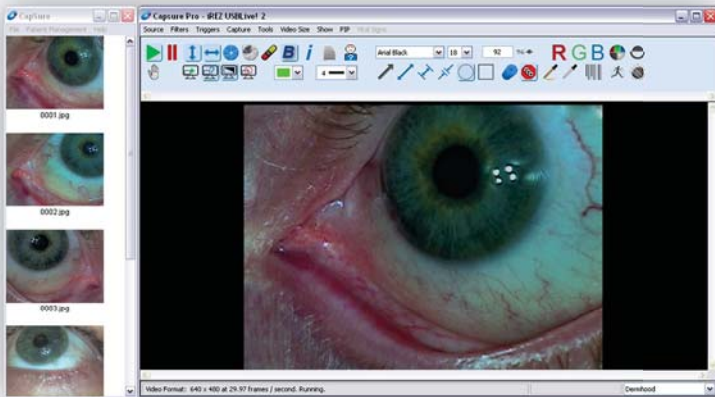
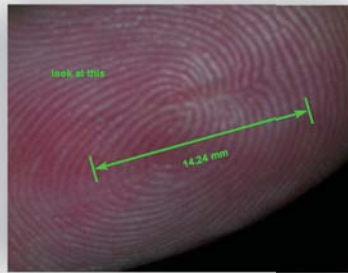
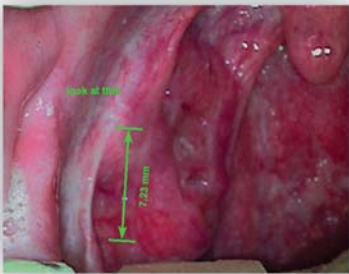
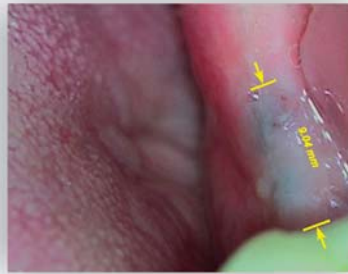
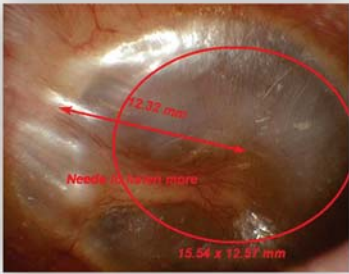
Store-and-Forward Options

CapSure can function as a store-and-forward solution in a private practice or clinic and is robust enough to service large enterprise-wide systems with the addition of the CONi™ Services application.

- Each image has its own identifying filename to distinguish between images and patient sessions.
- When each patient session closes, images are saved in the preselected location rather than in a visible area, maintaining patient privacy.
- CONi Services, used in large enterprise-wide systems, maintains HIPAA compliance by storing images in an EMR PACS, then cleanses originating computer of all data remnants and images.

Works with your PC or Mac and on most popular video codecs including:





Minimum Hardware Requirements

- Processor: Intel Core 2 Duo processor.
- Interface: One USB 2.0 port (Built-in USB port is recommended).
- Memory: 512 MB DDR DRAM (1GB+ recommended).
- CD ROM/DVD: Compact Disk or DVD combo drive is recommended.
- Hard Disk Space: 10 GB for image library (Write speeds should be 7200rpm for time-lapse video capture) (Average bitmap size is 3-7 MB).
- Video Card: Rocket-fast GeForce 5900 or better (faster IS better. 256 MB of memory is recommended). (Must support DirectX 3D).
- Camera Support: TotalExam™ with USB Live! 2.0 interface, iREZ i2100c, iREZ K2r.

Works with your PC or Mac and on most popular video codecs including:

