



## Video Ophthalmoscope



### Panoramic Views

This revolutionary video ophthalmoscope provides easy entry into the eye. The wider field of view allows a practitioner to more easily observe conditions such as hypertension, diabetic retinopathy and papilledema.

- Full optic view provided through the cornea to the back of the eye.
- Obtain clear images.
- Fast, easy entry into undilated pupils.

### Added Features

The video ophthalmoscope has added features to enhance patient examinations.

- 25° field of view vs. the standard 5° field of view.
- Greater working distance improves comfort for the patient and practitioner.
- Patented Glare Extinguishment System prevents interference from unwanted glare and reflections.
- Halogen HPX™ lamp delivers bright, white light.
- Compatible with Welch Allyn 3.5 volt power sources.

By converging illumination to a point at the cornea, Axial PointSource™ optics allows easy entry into even the smallest pupils. It then enables the illumination pathway to diverge to the retina, creating a very wide illuminated area of the fundus.

The scope's unique viewing system allows the practitioner to see the illuminated area on virtually the same axis, creating the widest field of view attainable in undilated ophthalmoscopy. This means the practitioner is actually viewing the fundus through the mirror that directs the illumination into the eye, maximizing the alignment of the viewing axis with the illuminated area.

In addition to obtaining superior views of the fundus, the video ophthalmoscope also provides enhanced magnification – 26% more than standard scopes making it easier to see retinal details.



Works with your PC or Mac and on most popular video codecs including:

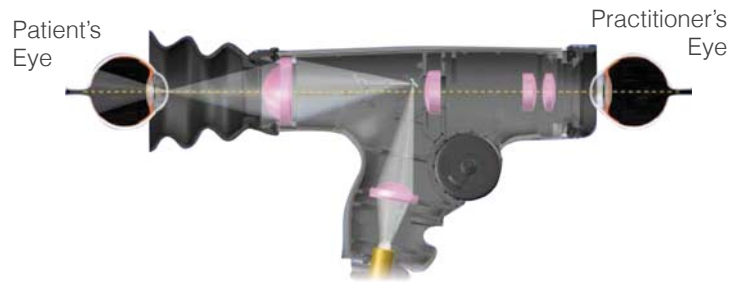
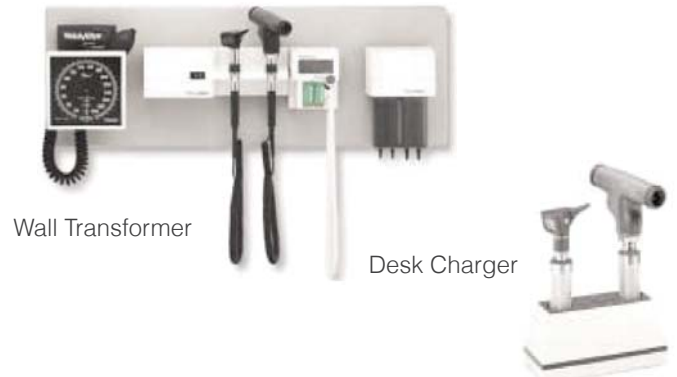
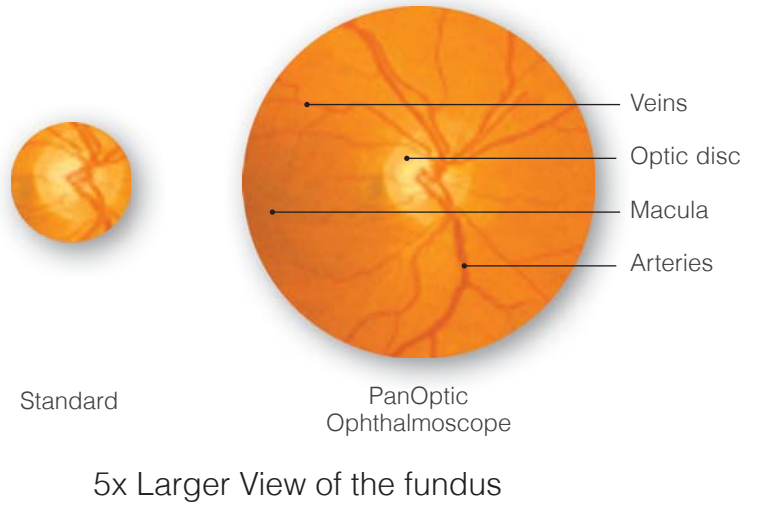


### Product Specifications

Dimensions	5.12" L x 1.40" W x 3.75" H Without eyecup (with eyecup: 6.57" L).
Weight	0.48 lbs without eyecup. 0.50 lbs with eyecup.
Focusing Range	-20 to +20 diopters.
Approvals	EN60601-1. IEC 60601-1-2. CAN/CSA-C22.2 No. 601.1M90. UL 2601-1, Second Edition, 1997.
Transport/Storage	-20°C - 49°C, 95% Rh max, 500hPa – 1060 hPa, altitude.
Operating	10°C - 49°C, 95% Rh max, 500 hPa – 1060 hPa, altitude.



### Field of View



Works with your PC or Mac and on most popular video codecs including:

