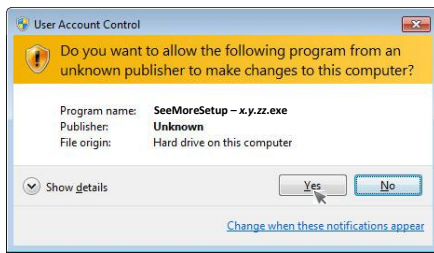
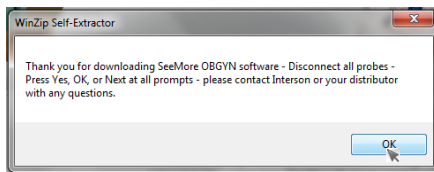


SeeMore Installation

Download SeeMoreSetup – x.y.zz.exe and chose Run or,
if using a saved file, double click "SeeMoreSetup – x.y.zz.exe"



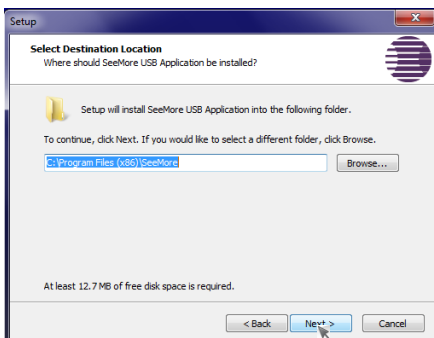
- Click "Yes" to proceed



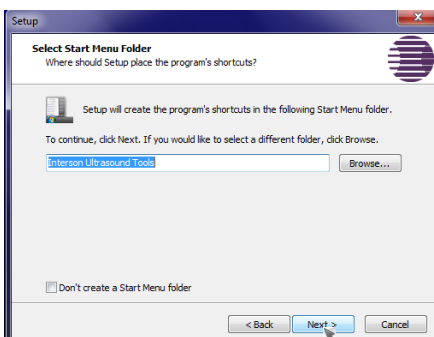
- Click "OK" to proceed



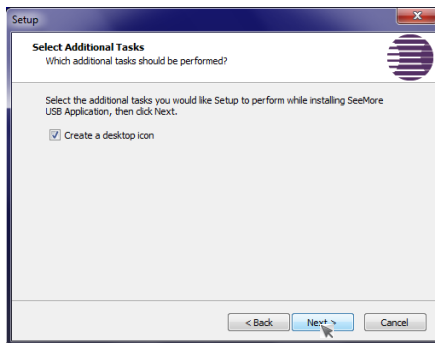
- Welcome to the SeeMore USB Application Setup Wizard
- Click "Next" to proceed



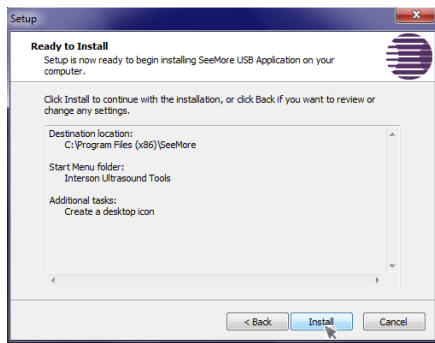
- Select Destination Location
- You can use the default or specify your own directory
- Click "Next" to proceed



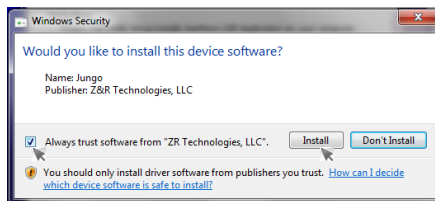
- Select Start Menu Folder
- You can use the default or specify your own directory
- Click "Next" to proceed



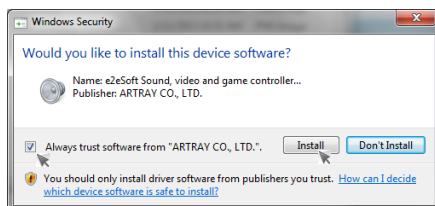
- Select Additional Tasks
- This step will make a desktop icon to easily launch SeeMore
- Click “Next” to proceed



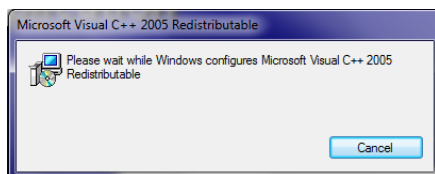
- Ready to Install
- Click “Install” to proceed



- Would you like to install this device driver
- Click “Always trust software from....”
- This is the probe driver control
- Click “Install” to proceed



- Would you like to install this device driver
- Click “Always trust software from....”
- This is the remote webcam driver
- Click “Install” to proceed



- Microsoft Visual C++ 2005 Redistributable
- Do NOT cancel – this software is needed to run SeeMore



- Completing the SeeMore USB Application Setup Wizard
- Click “Finish”
- The SeeMore installation process is now complete
- Be sure to download and install the XVID video player to view the embedded help videos