

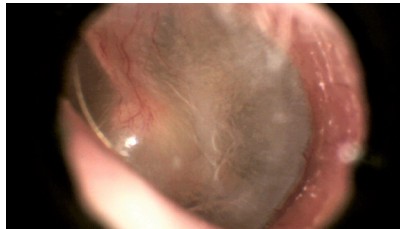


TOTALEXAM® Lite

Specifically designed with the clinician and medical professional in mind, the TotalExam® Lite is our most feature complete and lightweight video solution for telemedicine, available in both auto-focus and otoscope models.

It includes patented dual-polarization hood and the USB safety cable locking for continuous attachment, as well as in-field diagnostics and a complete list of peripherals including tongue depressor, and polarizing dermatology hood.

Incorporating over twelve years of innovation into its design, TotalExam® Lite is FDA cleared and U.S. FCC approved. It can be used both stand-alone or integrated with our virtual health platform, eNcounter®.



**Images are unedited*

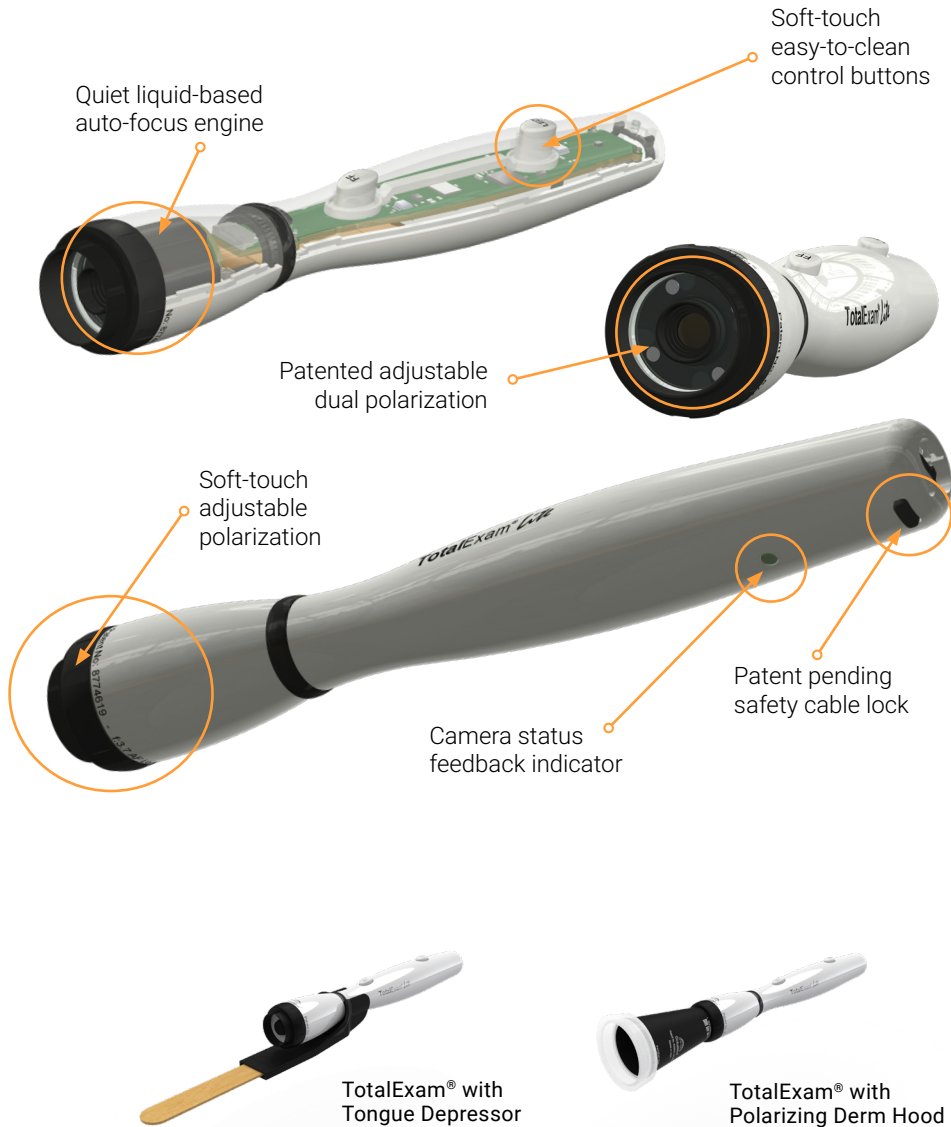


+1 (480) 922-0044
globalmed.com

15023 N 73rd Street
Scottsdale, AZ 85260
United States



TOTALEXAM® Lite



Items in the TotalExam® Lite camera kit may be ordered separately. The complete kit includes one camera and one otoscope:

- TotalExam® Lite Camera | Qty 1
- TotalExam® Lite Oto | Qty 1
- TotalExam Polarizing Derm Hood | Qty 1
- Tongue Depressor Adapter | Qty 1
- USB 2.0 Cable, 2.5 Meters | Qty 2
- One Touch Collars | Qty 5
- 6" Adult Tongue Depressor | Qty 5
- Adult Specula, 4.25mm | Qty 5
- Child Specula, 3.0mm | Qty 5

FEATURES

- Available in general exam and otoscope
- Dynamic freeze-frame
(best out of 8 frames upon button release)
- 60 fps video engine *(30 fps output)*
- Two brightness levels
- USB2 UVC connects to any OS *(Mac/PC/Linux)*
- MJPEG video stream support for telemedicine consults

OPTICS

- HD CMOS BSI 720p sensor *(16:9 AR)*
- Built-in auto focus engine
- Quiet mechanical-free liquid lensing engine
- High-dynamic HD video sensor
- Amazing f: 3.7 aperture for lowlight

LIGHTING

- Four LED auto-focus carousel for balanced lighting
- Eight LED otoscope carousel supporting 28,000 Lux
- 7200K color temperature for AF and 5200K for otoscope
- Auto/Manual white balancing
- Adjustable dynamic video controls
- Built-in in-field diagnostics