



## TOTAL EXAM® 3.2

The TotalExam® 3.2 combines excellent HD image quality, intuitive design and versatility to take your telemedicine imagery needs to a new level of high definition imagery. The TotalExam 3.2 has interchangeable attachments and accessories, allowing a wide variety of medical evidence collection applications in fields such as teledermatology, ophthalmology, and family medicine.

The TotalExam 3.2 delivers crisp, artifact-free HD images, using an 8-LED carousel, with white balance and adjustable brightness. TotalExam 3.2 provides smooth video with 60 frames per second, and the clearest still image using count back freeze frame analysis.

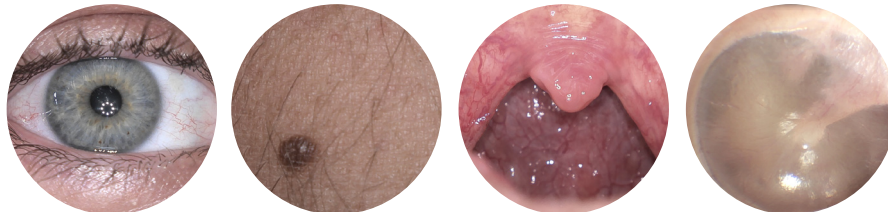
The intuitive ergonomic design includes a pivoting head and instinctive button locations, making it easier to capture hard-to-reach images.

USB 3.0 connectivity makes the TotalExam 3.2 a true plug-and-play general examination camera, compatible with laptops, tablets, and telemedicine stations.



+1 (480) 922-0044  
globalmed.com

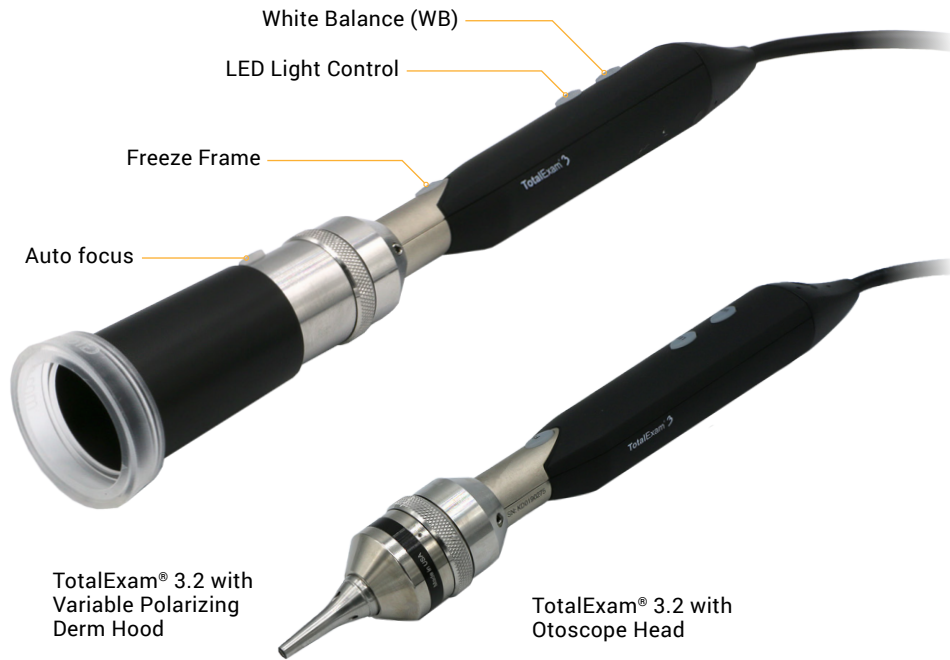
15023 N 73<sup>rd</sup> Street  
Scottsdale, AZ 85260  
United States



*\*Images are unedited*



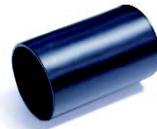
# TOTAL EXAM® 3.2



Otoscope head fits adult 4.25mm specula



Variable Polarizing Hood with disposable one touch collar



Derm Hood



Tongue depressor attachment fits standard 6.0 wooden depressors

Items in the TotalExam® 3.2 camera kit may be ordered separately. The complete kit includes:

- TotalExam® 3.2 Camera | Qty 1
- TotalExam® Autofocus Head | Qty 1
- TotalExam® Otoscope Head | Qty 1
- TotalExam® Variable Polarizing Derm Hood | Qty 1
- TotalExam® Derm Hood | Qty 1
- TotalExam® Tongue Depressor Adapter | Qty 1
- 6" Adult Tongue Depressor | Qty 5
- One Touch Collars | Qty 5
- Specula, 4.25mm | Qty 5

<b>Dimensions</b>	Camera Body: 214mm x 33mm Autofocus Head: 38mm x 33mm Otoscope Head: 60mm x 33mm
<b>Body Weight</b>	~10 oz
<b>Focus Type</b>	Autofocus
<b>Snapshot Size</b>	1 Megapixel
<b>Video Resolution</b>	1280 x 720p (captured)
<b>Frame Rate</b>	Up to 60 frames per second
<b>Output</b>	USB 3.0
<b>Integrated Freeze Frame</b>	Push-button <i>(selects clearest frame of previous 16 frames)</i>
<b>White Balance</b>	Push-button
<b>Lighting</b>	Autofocus Head: 8 LEDs Otoscope Head: 2 LEDs
<b>Operating Temperature</b>	0° - 42°C (32°-107°F)
<b>Operating Humidity</b>	Less than 90%
<b>Power Usage</b>	Less than 4W
<b>Voltage Usage</b>	~ 0.800 mA @5 VDC using USB 3.0 only
<b>Aspect Ratio</b>	16:9
<b>Lens (Aperture)</b>	f:3.0 M12 650nm IR filter f:18.0 FOV: r= 10mm DOF: 12mm - 14mm